



Runtz  
Miami, FL

Sample 432-042423-124

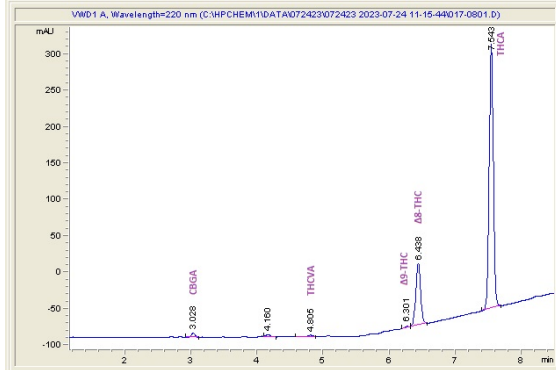
Tropical Punch

Sample Submitted: 04-24-2023; Report Date: 07-27-2023

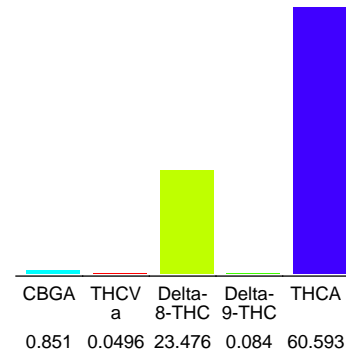
## Tropical Punch

Extract

### Chromatogram



### Cannabinoid Profile



### Cannabinoid Profile by HPLC

0.08%

Delta-9-THC

0.00%

CBD

85.05%

Total Cannabinoids

Cannabinoid	% wt	mg/g
CBGA	0.851	8.51
THCVa	0.0496	0.496
Delta-8-THC	23.48	234.76
Delta-9-THC	0.084	0.84
THCA	60.59	605.93
<b>Total Cannabinoids</b>	<b>85.05</b>	<b>850.5</b>
<b>Calculated CBD Yield</b>	<b>0.00</b>	<b>0.00</b>

Calculated Maximum CBD Yield = CBD + 0.877 \* CBDA

#### Marin Analytics, LLC

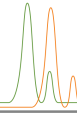
250 Bel Marin Keys Blvd, Suite D4  
Novato, CA 94949

833-321-TEST / info@marinanalytics.com

*Sara Biancalana*

Sara Biancalana  
Chief Scientist

This sample has been tested by Marin Analytics, LLC using valid testing methodologies and a quality system. Values reported relate only to the sample tested. Marin Analytics, LLC makes no claims as to the efficacy, safety, or other risks associated with any detected or non-detected levels of any compounds reported herein. This Certificate shall not be reproduced except in full without the written approval of Marin Analytics, LLC. Copyright 2023 Marin Analytics, LLC All Rights Reserved.



Runtz  
Miami, FL

Sample 432-072423-125

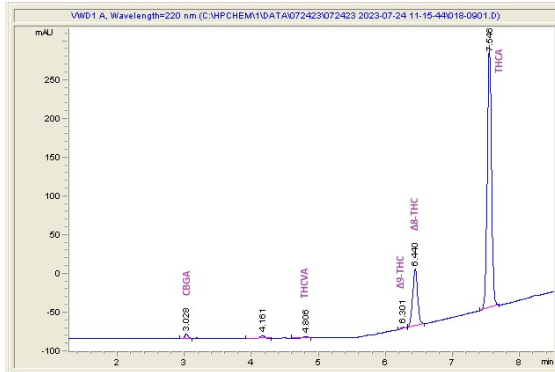
Strawberry Lemonade

Sample Submitted: 07-24-2023; Report Date: 07-27-2023

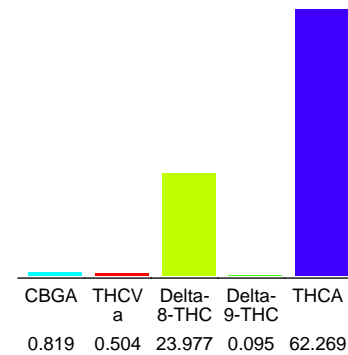
## Strawberry Lemonade

Extract

### Chromatogram



### Cannabinoid Profile



### Cannabinoid Profile by HPLC

**0.10%**

Delta-9-THC

**0.00%**

CBD

**87.66%**

Total Cannabinoids

Cannabinoid	% wt	mg/g
CBGA	0.819	8.19
THCVa	0.504	5.04
Delta-8-THC	23.98	239.77
Delta-9-THC	0.095	0.95
THCA	62.27	622.69
<b>Total Cannabinoids</b>	<b>87.66</b>	<b>876.6</b>
<b>Calculated CBD Yield</b>	<b>0.00</b>	<b>0.00</b>

Calculated Maximum CBD Yield = CBD + 0.877 \* CBDA

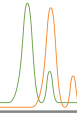
**Marin Analytics, LLC**

250 Bel Marin Keys Blvd, Suite D4  
Novato, CA 94949

833-321-TEST / info@marinanalytics.com

**Sara Biancalana**  
Chief Scientist

This sample has been tested by Marin Analytics, LLC using valid testing methodologies and a quality system. Values reported relate only to the sample tested. Marin Analytics, LLC makes no claims as to the efficacy, safety, or other risks associated with any detected or non-detected levels of any compounds reported herein. This Certificate shall not be reproduced except in full without the written approval of Marin Analytics, LLC. Copyright 2023 Marin Analytics, LLC All Rights Reserved.



**Runtz**  
Miami, FL

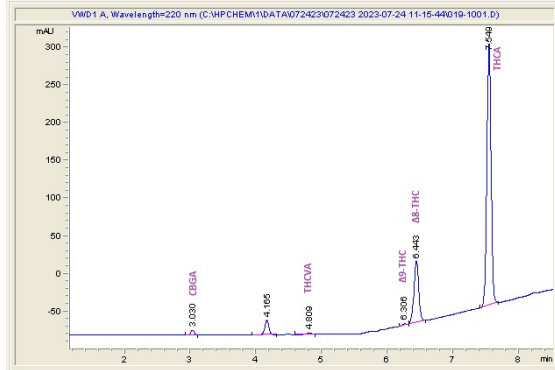
**Sample 432-072423-126**

**Baja Blast**

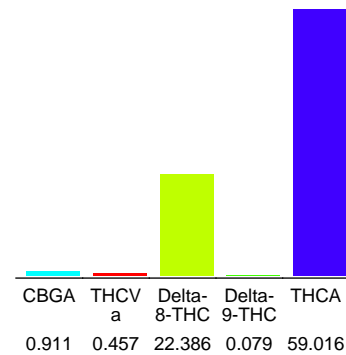
Sample Submitted: 07-24-2023; Report Date: 07-24-2023

**Baja Blast**  
Extract

**Chromatogram**



**Cannabinoid Profile**



**Cannabinoid Profile by HPLC**

**0.08%**  
Delta-9-THC

**0.00%**  
CBD

**82.85%**  
Total Cannabinoids

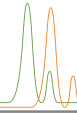
Cannabinoid	% wt	mg/g
CBGA	0.911	9.11
THCVA	0.457	4.57
Delta-8-THC	22.39	223.86
Delta-9-THC	0.079	0.79
THCA	59.02	590.16
<b>Total Cannabinoids</b>	<b>82.85</b>	<b>828.5</b>
<b>Calculated CBD Yield</b>	<b>0.00</b>	<b>0.00</b>

Calculated Maximum CBD Yield = CBD + 0.877 \* CBDA

**Marin Analytics, LLC**  
250 Bel Marin Keys Blvd, Suite D4  
Novato, CA 94949  
833-321-TEST / info@marinanalytics.com

*Sara Biancalana*  
**Sara Biancalana**  
Chief Scientist

This sample has been tested by Marin Analytics, LLC using valid testing methodologies and a quality system. Values reported relate only to the sample tested. Marin Analytics, LLC makes no claims as to the efficacy, safety, or other risks associated with any detected or non-detected levels of any compounds reported herein. This Certificate shall not be reproduced except in full without the written approval of Marin Analytics, LLC. Copyright 2023 Marin Analytics, LLC All Rights Reserved.



**Runtz**  
Miami, FL

**Sample 432-072423-127**

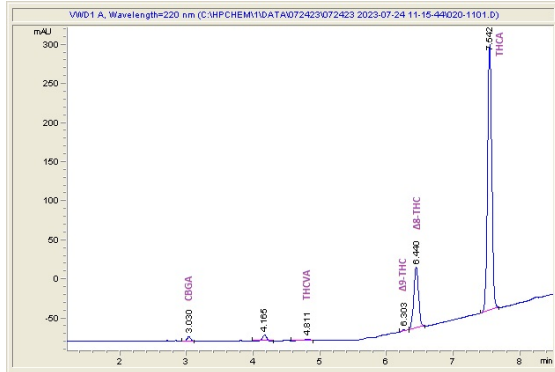
**Passion Fruit Pop**

Sample Submitted: 07-24-2023; Report Date: 07-27-2023

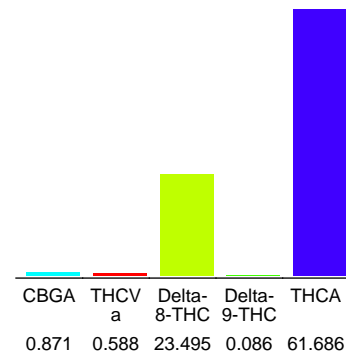
**Passion Fruit Pop**

Extract

**Chromatogram**



**Cannabinoid Profile**



**Cannabinoid Profile by HPLC**

**0.09%**  
Delta-9-THC

**0.00%**  
CBD

**86.73%**  
Total Cannabinoids

Cannabinoid	% wt	mg/g
CBGA	0.871	8.71
THCVa	0.588	5.88
Delta-8-THC	23.5	234.95
Delta-9-THC	0.086	0.86
THCA	61.69	616.86
<b>Total Cannabinoids</b>	<b>86.73</b>	<b>867.3</b>
<b>Calculated CBD Yield</b>	<b>0.00</b>	<b>0.00</b>

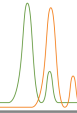
Calculated Maximum CBD Yield = CBD + 0.877 \* CBDA

**Marin Analytics, LLC**  
250 Bel Marin Keys Blvd, Suite D4  
Novato, CA 94949

833-321-TEST / info@marinanalytics.com

**Sara Biancalana**  
Chief Scientist

This sample has been tested by Marin Analytics, LLC using valid testing methodologies and a quality system. Values reported relate only to the sample tested. Marin Analytics, LLC makes no claims as to the efficacy, safety, or other risks associated with any detected or non-detected levels of any compounds reported herein. This Certificate shall not be reproduced except in full without the written approval of Marin Analytics, LLC. Copyright 2023 Marin Analytics, LLC All Rights Reserved.



**Runtz**  
Miami, FL

**Sample 432-072423-128**

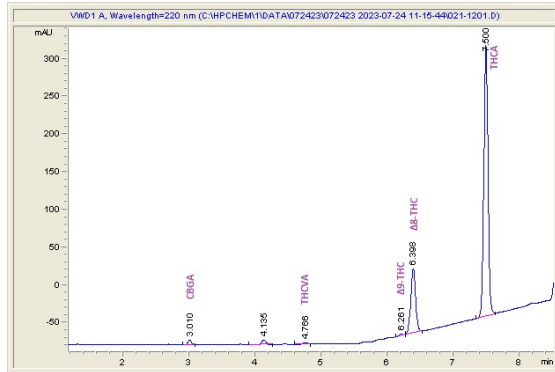
**Rainbow Cotton Candy**

Sample Submitted: 07-24-2023; Report Date: 07-27-2023

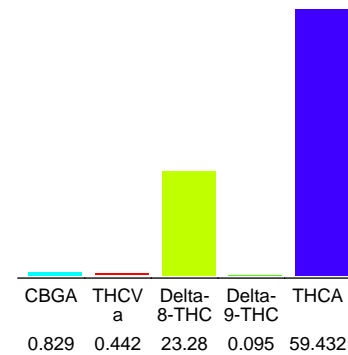
# Rainbow Cotton Candy

Extract

## Chromatogram



## Cannabinoid Profile



## Cannabinoid Profile by HPLC

**0.10%**  
Delta-9-THC

**0.00%**  
CBD

**84.08%**  
Total Cannabinoids

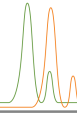
Cannabinoid	% wt	mg/g
CBGA	0.829	8.29
THCVa	0.442	4.42
Delta-8-THC	23.28	232.8
Delta-9-THC	0.095	0.95
THCA	59.43	594.32
<b>Total Cannabinoids</b>	<b>84.08</b>	<b>840.8</b>
<b>Calculated CBD Yield</b>	<b>0.00</b>	<b>0.00</b>

Calculated Maximum CBD Yield = CBD + 0.877 \* CBDA

**Marin Analytics, LLC**  
250 Bel Marin Keys Blvd, Suite D4  
Novato, CA 94949  
833-321-TEST / info@marinanalytics.com

*Sara Biancalana*  
**Sara Biancalana**  
Chief Scientist

This sample has been tested by Marin Analytics, LLC using valid testing methodologies and a quality system. Values reported relate only to the sample tested. Marin Analytics, LLC makes no claims as to the efficacy, safety, or other risks associated with any detected or non-detected levels of any compounds reported herein. This Certificate shall not be reproduced except in full without the written approval of Marin Analytics, LLC. Copyright 2023 Marin Analytics, LLC All Rights Reserved.



Runtz  
Miami, FL

Sample 432-072423-129

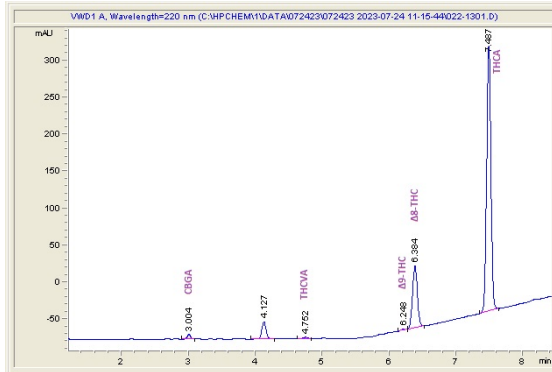
Pineapple Paradise

Sample Submitted: 07-24-2023; Report Date: 07-27-2023

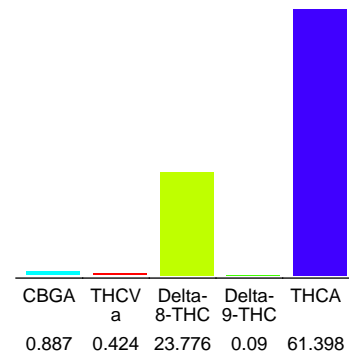
### Pineapple Paradise

Extract

#### Chromatogram



#### Cannabinoid Profile



#### Cannabinoid Profile by HPLC

0.09%

Delta-9-THC

0.00%

CBD

86.58%

Total Cannabinoids

Cannabinoid	% wt	mg/g
CBGA	0.887	8.87
THCva	0.424	4.24
Delta-8-THC	23.78	237.76
Delta-9-THC	0.09	0.9
THCA	61.4	613.98
<b>Total Cannabinoids</b>	<b>86.58</b>	<b>865.8</b>
<b>Calculated CBD Yield</b>	<b>0.00</b>	<b>0.00</b>

Calculated Maximum CBD Yield = CBD + 0.877 \* CBDA

#### Marin Analytics, LLC

250 Bel Marin Keys Blvd, Suite D4  
Novato, CA 94949

833-321-TEST / info@marinanalytics.com

Sara Biancalana  
Chief Scientist